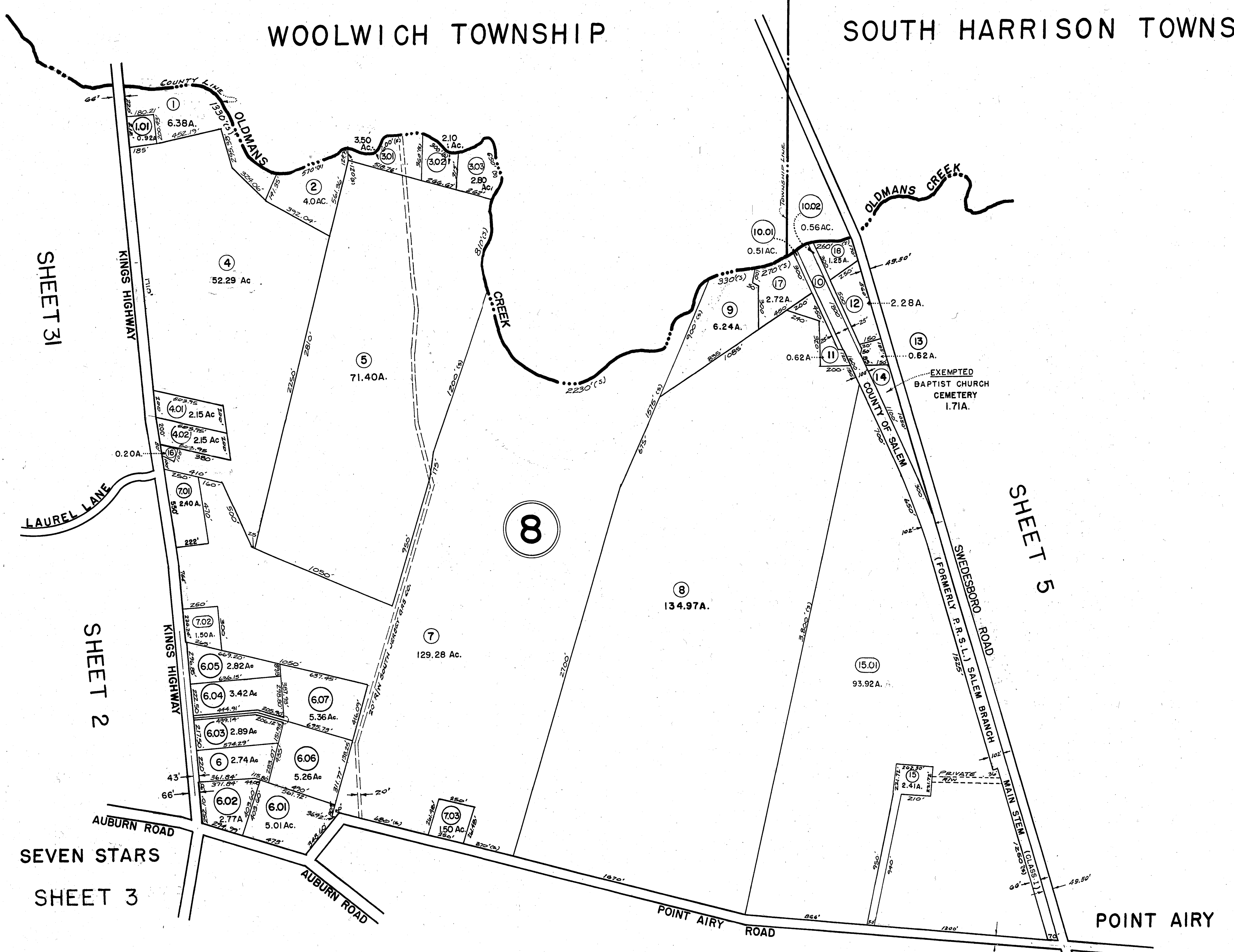
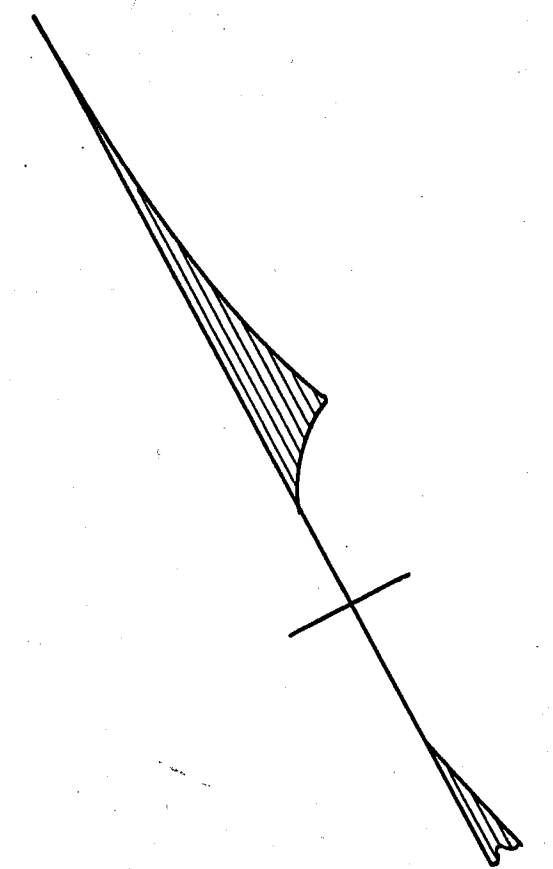


GLOUCESTER COUNTY

WOOLWICH TOWNSHIP

SOUTH HARRISON TOWNSHIP



SHEET 3I

SHEET 2

SEVEN STARS
SHEET 3

SHEET 13

SHEET 5

NEW JERSEY DEPARTMENT OF THE TREASURY
 DIVISION OF TAXATION
 ENGINEERING & RAILROAD TAX BUREAU
 APPROVED AS A TAX MAP PURSUANT TO THE
 PROVISIONS OF CHAPTER 175, LAWS OF 1913, ETC.
 FOR THE DIRECTOR, DIVISION OF TAXATION
 BY *C. J. Barnes*
 DATE: **AUG - 8 1961** STATE SUPERVISOR
 SERIAL NO. **327**

TAX MAP
PILESGROVE TOWNSHIP
 SCALE - 1" = 400' SALEM CO., N. J.
 SKINNER & COMPTON ENGINEERS
 JULY 3, 1961
 REVISED NOV. 24, 1961

THIS SHEET IS A SCANNED COPY OF THE TAX MAP ORIGINALLY PREPARED BY EUGENE
 COMPTON OF SKINNER & COMPTON, ENGINEERS, DATED: JULY 3, 1961.
 THE ORIGINAL APPROVED MAP IS ON FILE IN THE OFFICE OF THE TOWNSHIP ENGINEER.