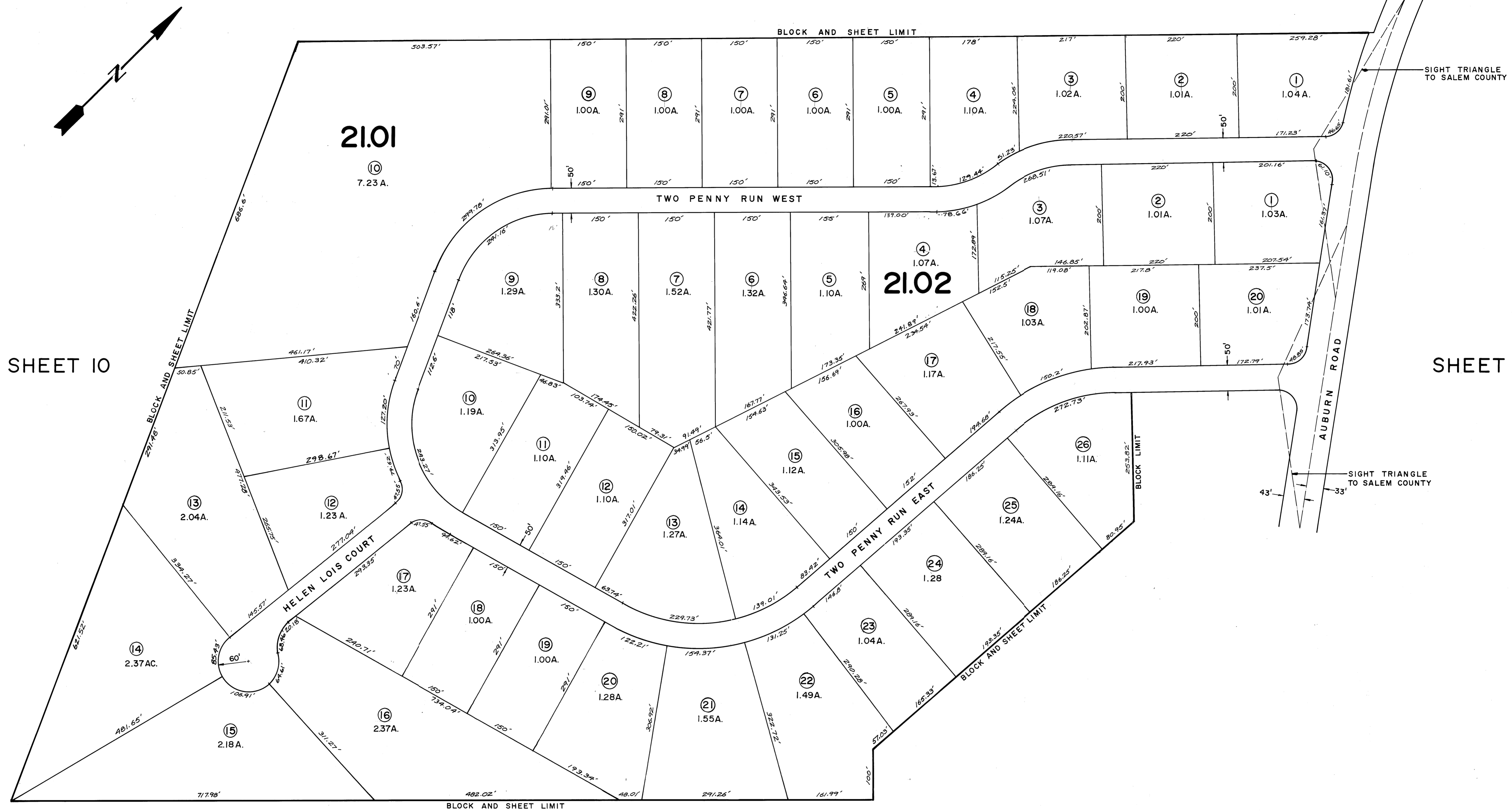


SHEET 10



SHEET 10

SHEET 2

SHEET 10

TAX ASSESSMENT MAP
 PILESGROVE TOWNSHIP
 SALEM COUNTY, NEW JERSEY
 SCALE: 1" = 100' JANUARY, 1994
 ALBERT A. FRALINGER, JR.,
 P.E. & L.S. LIC. 12588
 TOWNSHIP ENGINEER
 629 SHILOH PIKE, BRIDGETON, N. J. 08302