

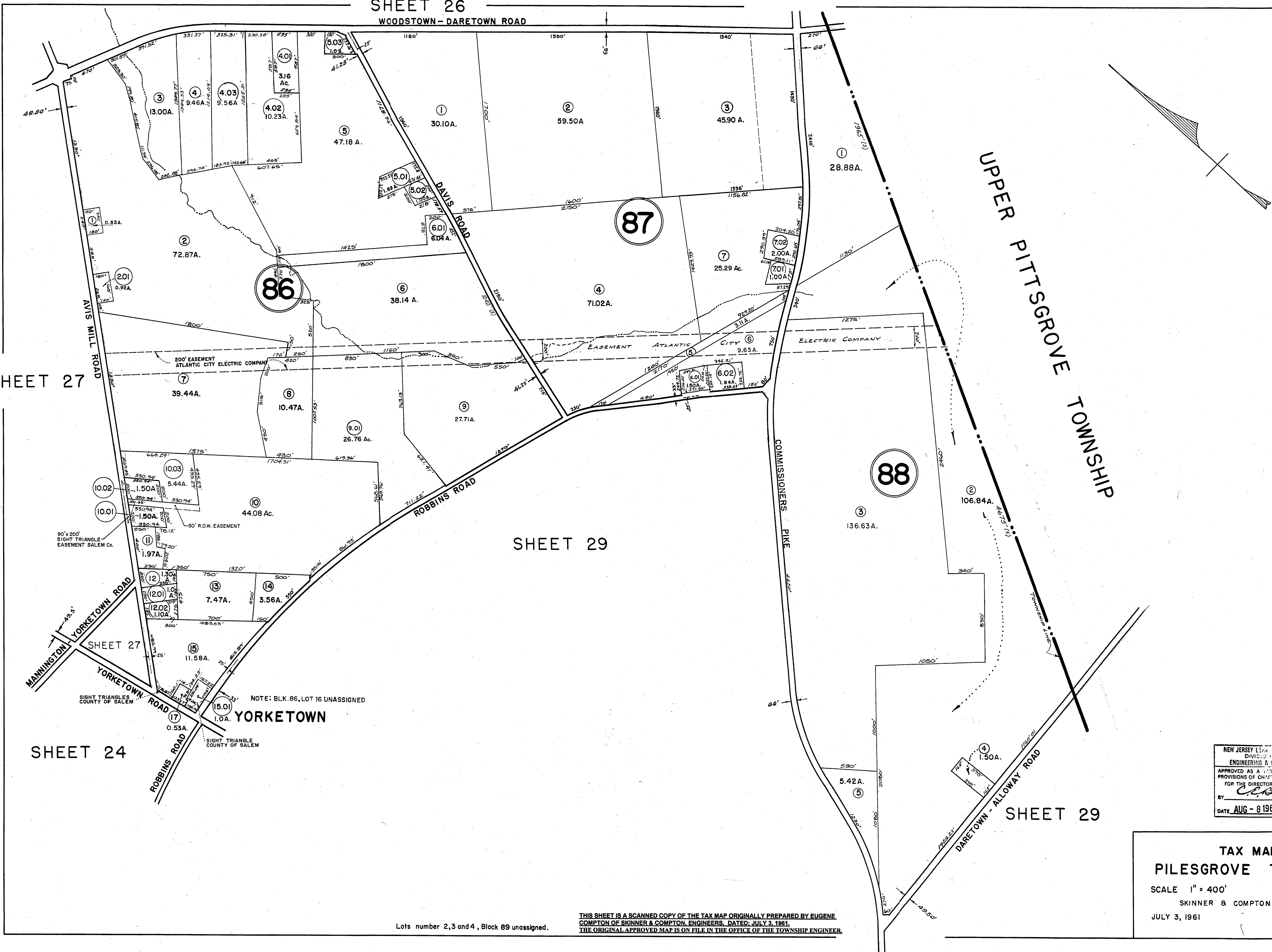
SHEET 27

SHEET 29

SHEET 24

SHEET 29

UPPER PITTSBORO TOWNSHIP



90' x 200' SIGHT TRIANGLE EASEMENT SALEM CO.

SIGHT TRIANGLES COUNTY OF SALEM

SIGHT TRIANGLE COUNTY OF SALEM

NOTE: BLK. 86, LOT 16 UNASSIGNED

Lots number 2,3 and 4, Block 89 unassigned.

THIS SHEET IS A SCANNED COPY OF THE TAX MAP ORIGINALLY PREPARED BY EUGENE COMPTON OF SKINNER & COMPTON, ENGINEERS, DATED, JULY 3, 1961. THE ORIGINAL APPROVED MAP IS ON FILE IN THE OFFICE OF THE TOWNSHIP ENGINEER.

NEW JERSEY DEPARTMENT OF THE TREASURY  
 DIVISION OF TAXATION  
 ENGINEERING & RAILROAD TAX BUREAU  
 APPROVED AS A TAX MAP PURSUANT TO THE PROVISIONS OF CHAPTER 175, LAWS OF 1913, ETC. FOR THE DIRECTOR, DIVISION OF TAXATION.  
 BY: *[Signature]* STATE SUPERVISOR  
 DATE: AUG - 8 1961 SERIAL NO. 327

**TAX MAP**  
**PILESBORO TOWNSHIP**  
 SCALE 1" = 400' SALEM CO., N. J.  
 SKINNER & COMPTON ENGINEERS  
 JULY 3, 1961