

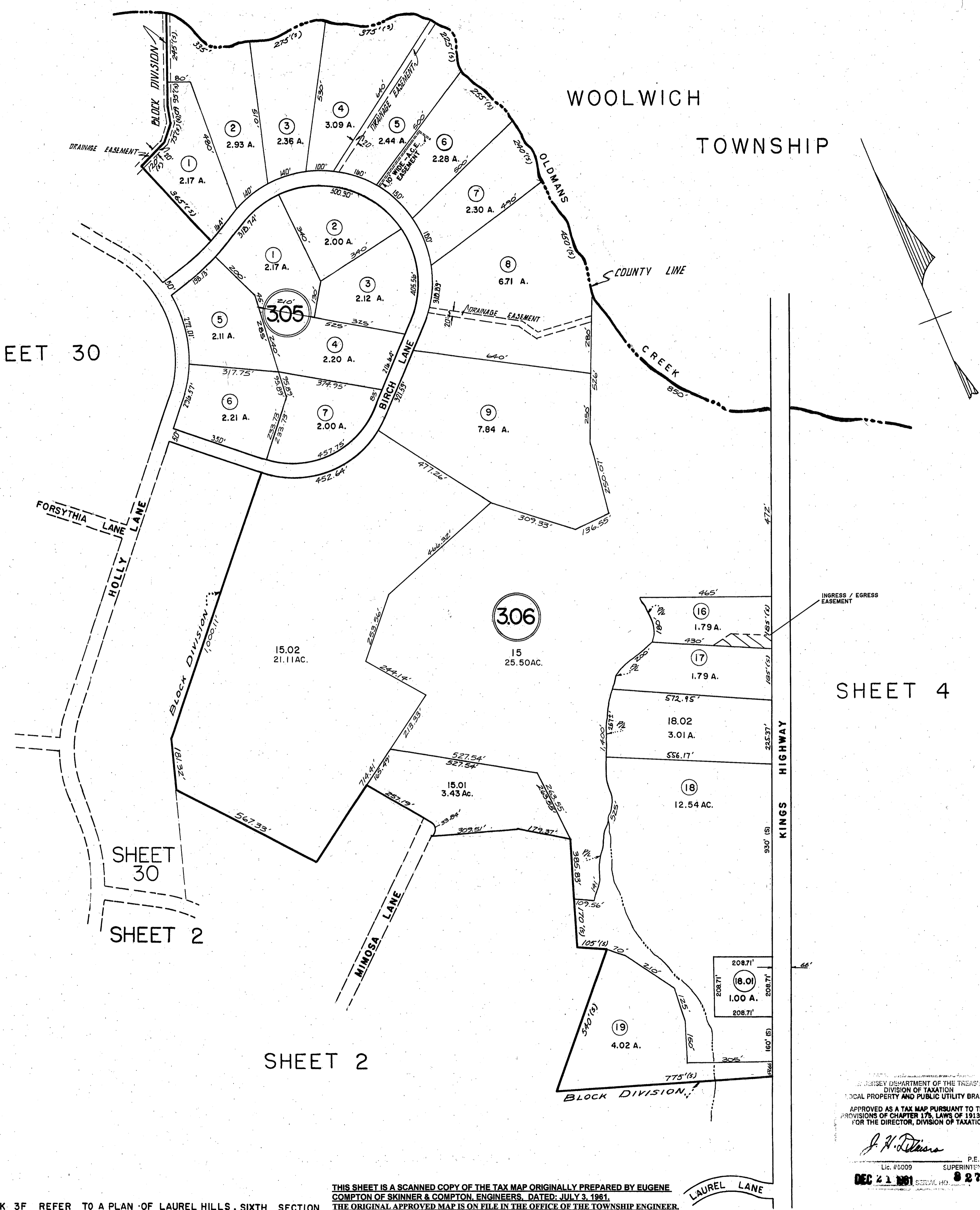
WOOLWICH TOWNSHIP

SHEET 30

SHEET 4

SHEET 30  
SHEET 2

SHEET 2



NEW JERSEY DEPARTMENT OF THE TREASURY  
DIVISION OF TAXATION  
LOCAL PROPERTY AND PUBLIC UTILITY BRANCH  
APPROVED AS A TAX MAP PURSUANT TO THE  
PROVISIONS OF CHAPTER 174, LAWS OF 1913, ETC.  
FOR THE DIRECTOR, DIVISION OF TAXATION

*J. H. Deane*  
LIC. #5009 SUPERINTENDENT

DEC 21 1981 8 27

**TAX MAP**  
**PILESGROVE TOWNSHIP**

SCALE 1"=200' SALEM CO., N.J.  
SKINNER & COMPTON, ENGINEERS

MARCH 21, 1972  
REVISED JULY 25, 1972  
REVISED DEC. 3, 1981

NOTE: LOT NUMBERS 1 to 4 and 7, BLOCK 3E AND LOTS 11 to 9 BLOCK 3F REFER TO A PLAN OF LAUREL HILLS, SIXTH SECTION

THIS SHEET IS A SCANNED COPY OF THE TAX MAP ORIGINALLY PREPARED BY EUGENE COMPTON OF SKINNER & COMPTON, ENGINEERS, DATED: JULY 3, 1981.  
THE ORIGINAL APPROVED MAP IS ON FILE IN THE OFFICE OF THE TOWNSHIP ENGINEER.