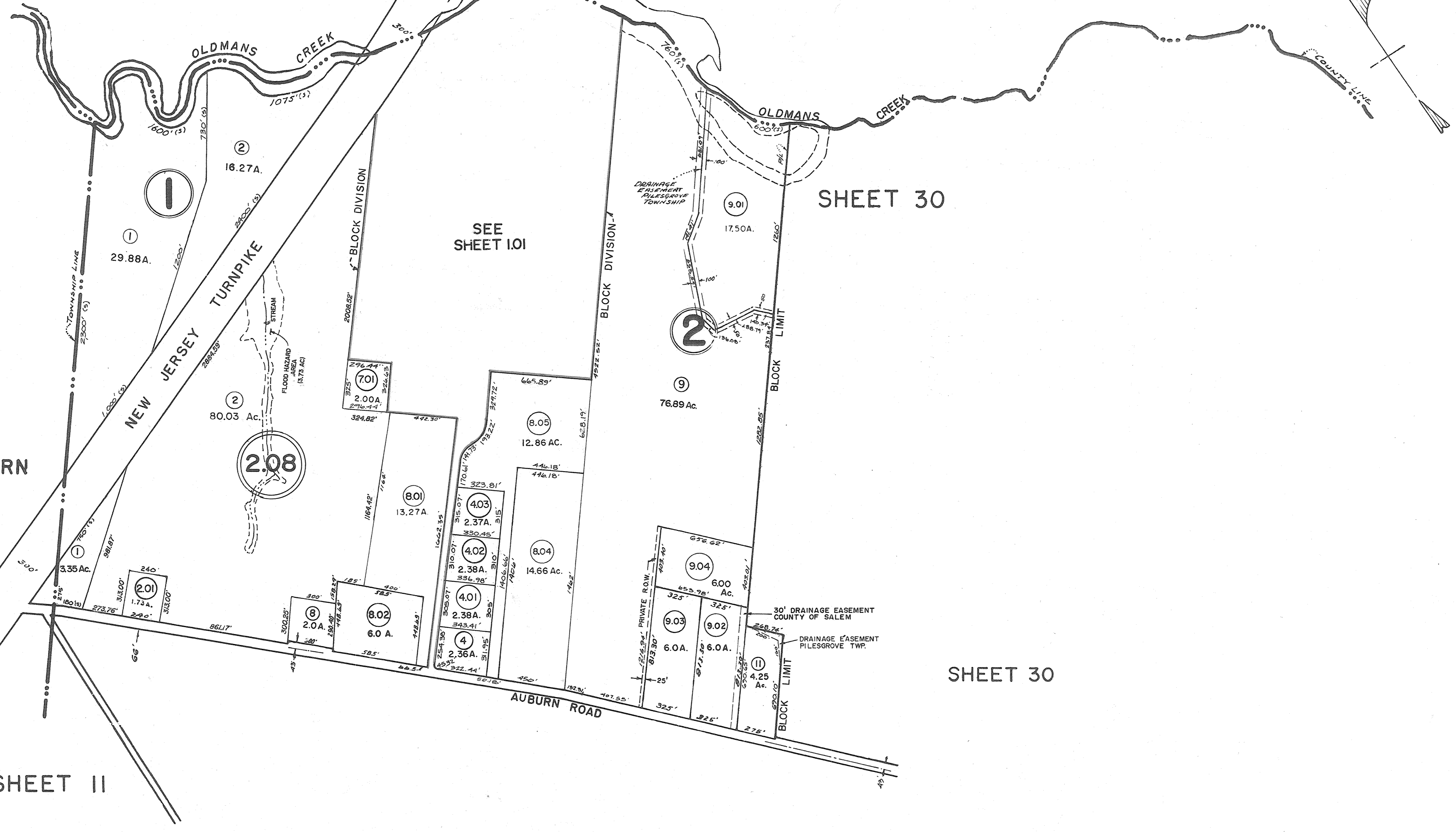


G L O U C E S T E R C O U N T Y
W O O L W I C H T O W N S H I P

O L D M A N S T O W N S H I P



AUBURN

SHEET II

SHEET 10

SHEET 30

SHEET 30

Lot 3, Blk. 2 unassigned - 1/7/02
Lot 12, Blk. 2 unassigned, added to Lot 10 10/12/87.
Lot 14, Blk. 2 unassigned.

THIS SHEET IS A SCANNED COPY OF THE TAX MAP ORIGINALLY PREPARED BY EUGENE COMPTON OF SKINNER & COMPTON, ENGINEERS, DATED: JULY 3, 1961.
THE ORIGINAL APPROVED MAP IS ON FILE IN THE OFFICE OF THE TOWNSHIP ENGINEER.

NEW JERSEY DEPARTMENT OF THE TREASURY
DIVISION OF TAXATION
ENGINEERING & RAILROAD TAX BUREAU
APPROVED AS A TAX MAP PURSUANT TO THE PROVISIONS OF CHAPTER 125, LAWS OF 1913, ETC.
FOR THE DIRECTOR, DIVISION OF TAXATION
BY: *E. Barnes*
DATE: AUG - 8 1961 STATE SUPERVISOR SERIAL NO. 32

TAX MAP
PILESGROVE TOWNSHIP
SCALE 1" = 400' SALEM CO., N.J.
SKINNER & COMPTON, ENGINEERS
JULY 3, 1961
REVISED AUGUST 11, 1964
REVISED JULY 25, 1972

6-240

1