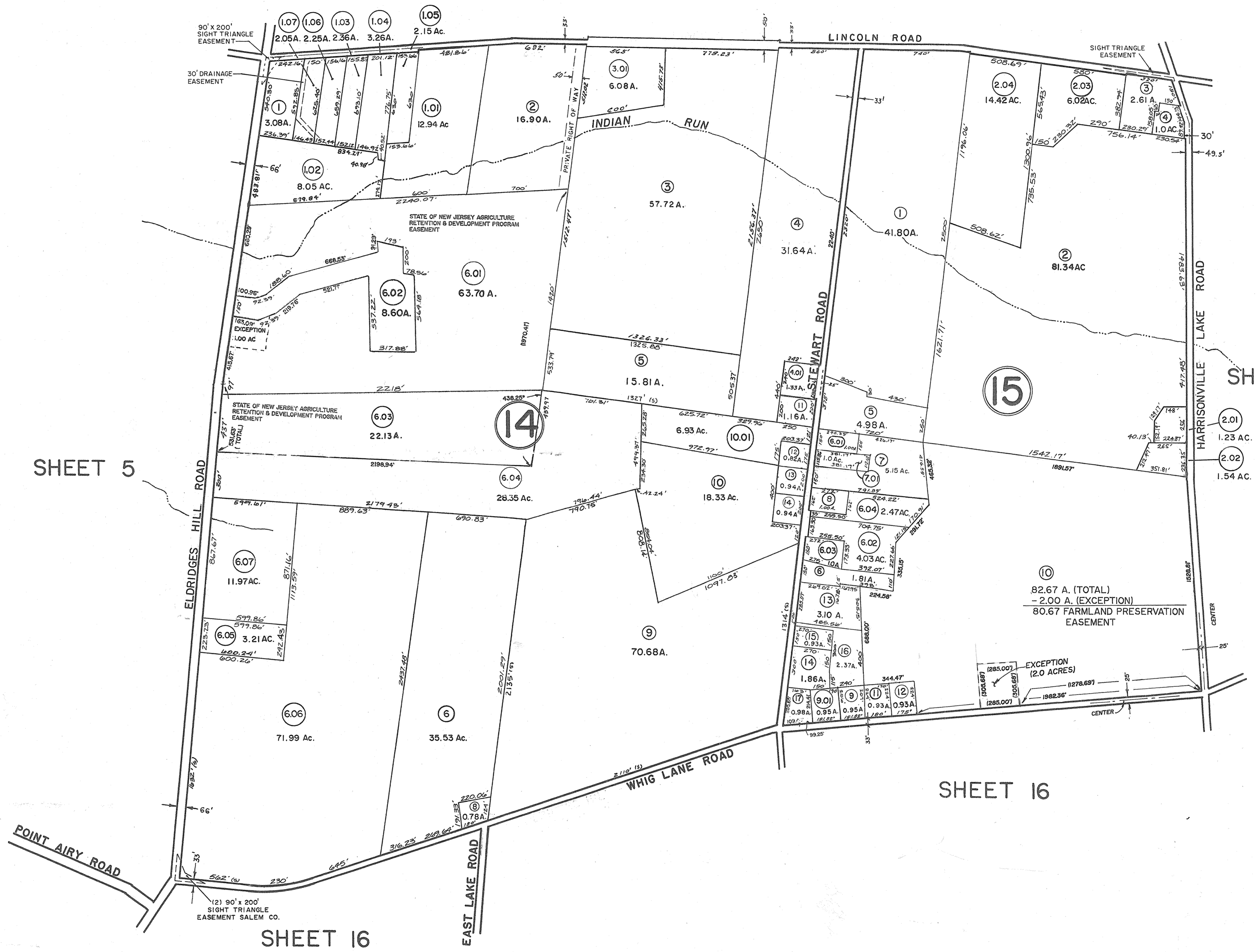


SHEET 8



SHEET 5

SHEET 9

SHEET 16

SHEET 16

ELDRIDGES HILL

NEW JERSEY DEPARTMENT OF THE TREASURY
 DIVISION OF TAXATION
 ENGINEERING & RAILROAD TAX BUREAU
 APPROVED AS A TAX MAP PURSUANT TO THE
 PROVISIONS OF CHAPTER 175, LAWS OF 1913, ETC.
 FOR THE DIRECTOR, DIVISION OF TAXATION
 BY *C. J. Benson*
 DATE AUG - 8 1961 STATE SUPERVISOR SERIAL NO. 327

TAX MAP
 PILESGROVE TOWNSHIP
 SCALE - 1" = 400' SALEM CO., N.J.
 SKINNER & COMPTON, ENGINEERS
 JULY 3, 1961

THIS SHEET IS A SCANNED COPY OF THE TAX MAP ORIGINALLY PREPARED BY EUGENE
 COMPTON OF SKINNER & COMPTON, ENGINEERS, DATED: JULY 3, 1961.
 THE ORIGINAL APPROVED MAP IS ON FILE IN THE OFFICE OF THE TOWNSHIP ENGINEER.

LOT 7, BLOCK 14 UNASSIGNED, COMBINED WITH LOT 6, 6/4/85