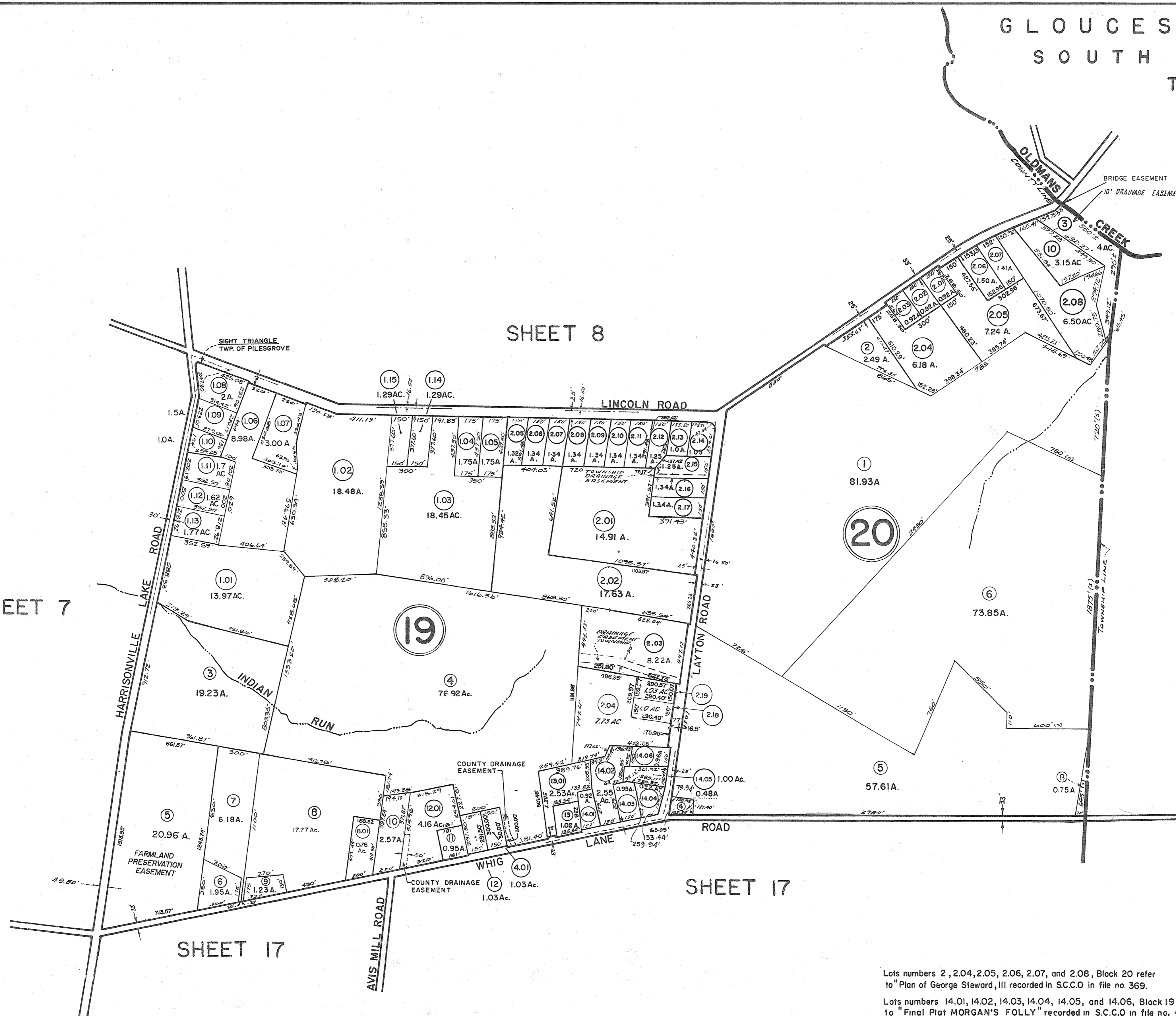


SHEET 7

SHEET 8

SHEET 17

UPPER
PITTS GROVE
TOWNSHIP



Lots numbers 2, 2.04, 2.05, 2.06, 2.07, and 2.08, Block 20 refer to "Plan of George Steward, III recorded in S.C.C.O in file no. 369.

Lots numbers 14.01, 14.02, 14.03, 14.04, 14.05, and 14.06, Block 19 refer to "Final Plat MORGAN'S FOLLY" recorded in S.C.C.O in file no. 424

Lots numbers 2.05 thru 2.17, Block 19 refer to "Final Plan of LAYTON FARM" SECTION ONE recorded in S.C.C.O. in file no. 437.

Lots numbers 2.03, 2.04, Block 19 refer to "Final Plan of LAYTON FARM" - SECTION TWO recorded in S.C.C.O in file no. 437.

Lot number 1, Block 19 unassigned 11-30-79
Lot number 2, Block 19 unassigned 11-30-79
Lot number 14, Block 19 unassigned 2-6-79
Lots number 7 and 9, Block 20 unassigned.

THIS SHEET IS A SCANNED COPY OF THE TAX MAP ORIGINALLY PREPARED BY EUGENE COMPTON OF SKINNER & COMPTON, ENGINEERS, DATED: JULY 3, 1961.
THE ORIGINAL APPROVED MAP IS ON FILE IN THE OFFICE OF THE TOWNSHIP ENGINEER.

NEW JERSEY DEPARTMENT OF THE TREASURY
DIVISION OF TAXATION
ENGINEERING & RAILROAD TAX BUREAU
APPROVED AS A TAX MAP PURSUANT TO THE PROVISIONS OF CHAPTER 175, LAWS OF 1913, ETC. FOR THE DIRECTOR, DIVISION OF TAXATION
BY: *C. Barnes*
DATE: AUG - 8 1961
STATE SUPERVISOR: 327
SERIAL NO. 327

TAX MAP
PILESGROVE TOWNSHIP
SCALE - 1" = 400' SALEM CO., N. J.
SKINNER & COMPTON, ENGINEERS
JULY 3, 1961