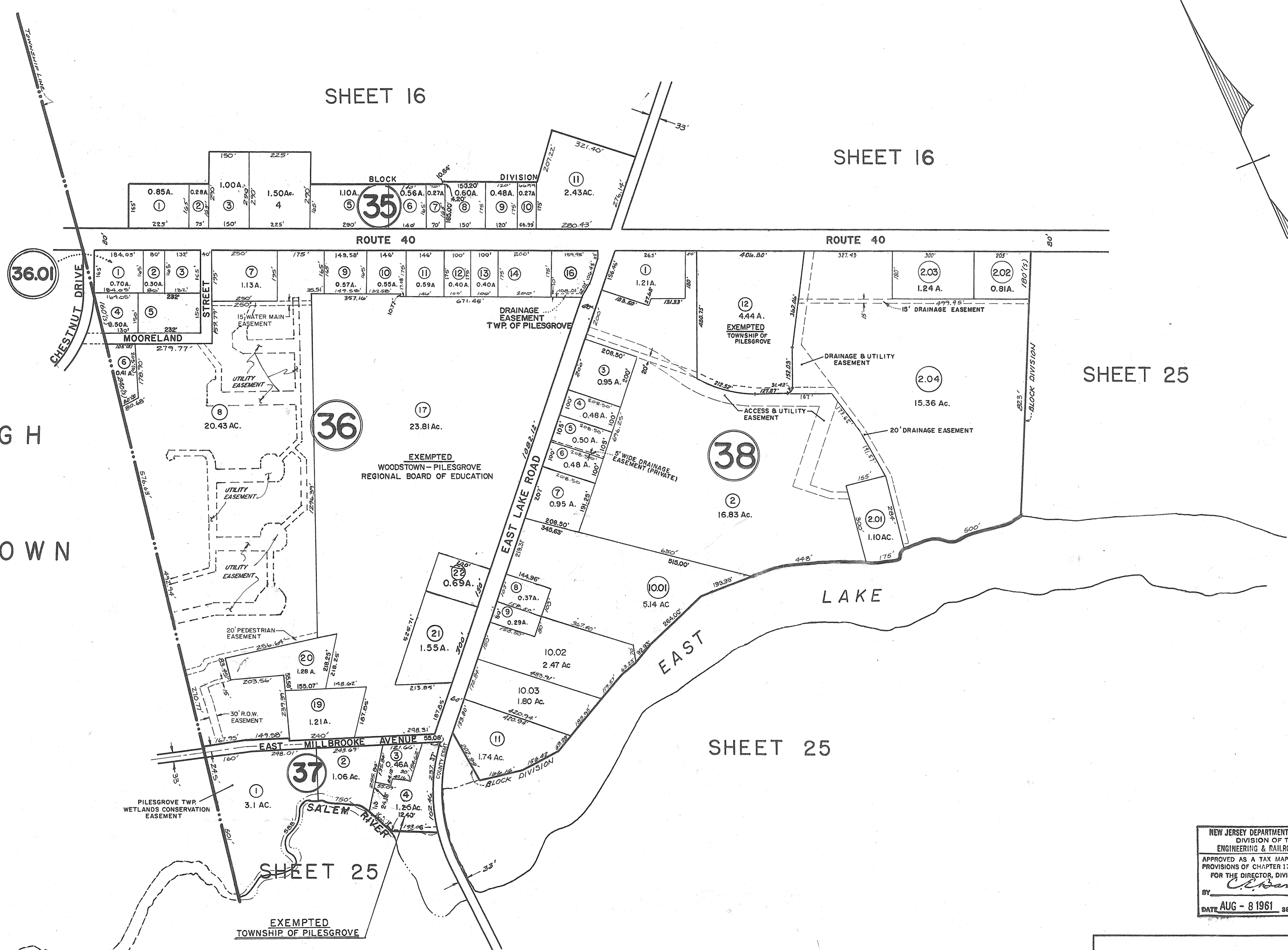


BOROUGH  
OF  
WOODSTOWN



BLOCK 36, LOT 18 UNASSIGNED 1-9-84  
BLOCK 37, LOT 5 IS UNASSIGNED  
BLOCK 37, LOT 6 IS UNASSIGNED

NEW JERSEY DEPARTMENT OF THE TREASURY  
DIVISION OF TAXATION  
ENGINEERING & RAILROAD TAX BUREAU  
APPROVED AS A TAX MAP PURSUANT TO THE  
PROVISIONS OF CHAPTER 175, LAWS OF 1913, ETC.  
FOR THE DIRECTOR, DIVISION OF TAXATION  
BY *C. B. Barnes*  
STATE SUPERVISOR 327  
DATE AUG - 8 1961 SERIAL NO. 327

TAX MAP  
PILESGROVE TOWNSHIP  
SCALE 1" = 200'  
SALEM CO., N. J.  
SKINNER & COMPTON, ENGINEERS  
JULY 3, 1961

THIS SHEET IS A SCANNED COPY OF THE TAX MAP ORIGINALLY PREPARED BY EUGENE  
COMPTON OF SKINNER & COMPTON, ENGINEERS, DATED: JULY 3, 1961.  
THE ORIGINAL APPROVED MAP IS ON FILE IN THE OFFICE OF THE TOWNSHIP ENGINEER.