

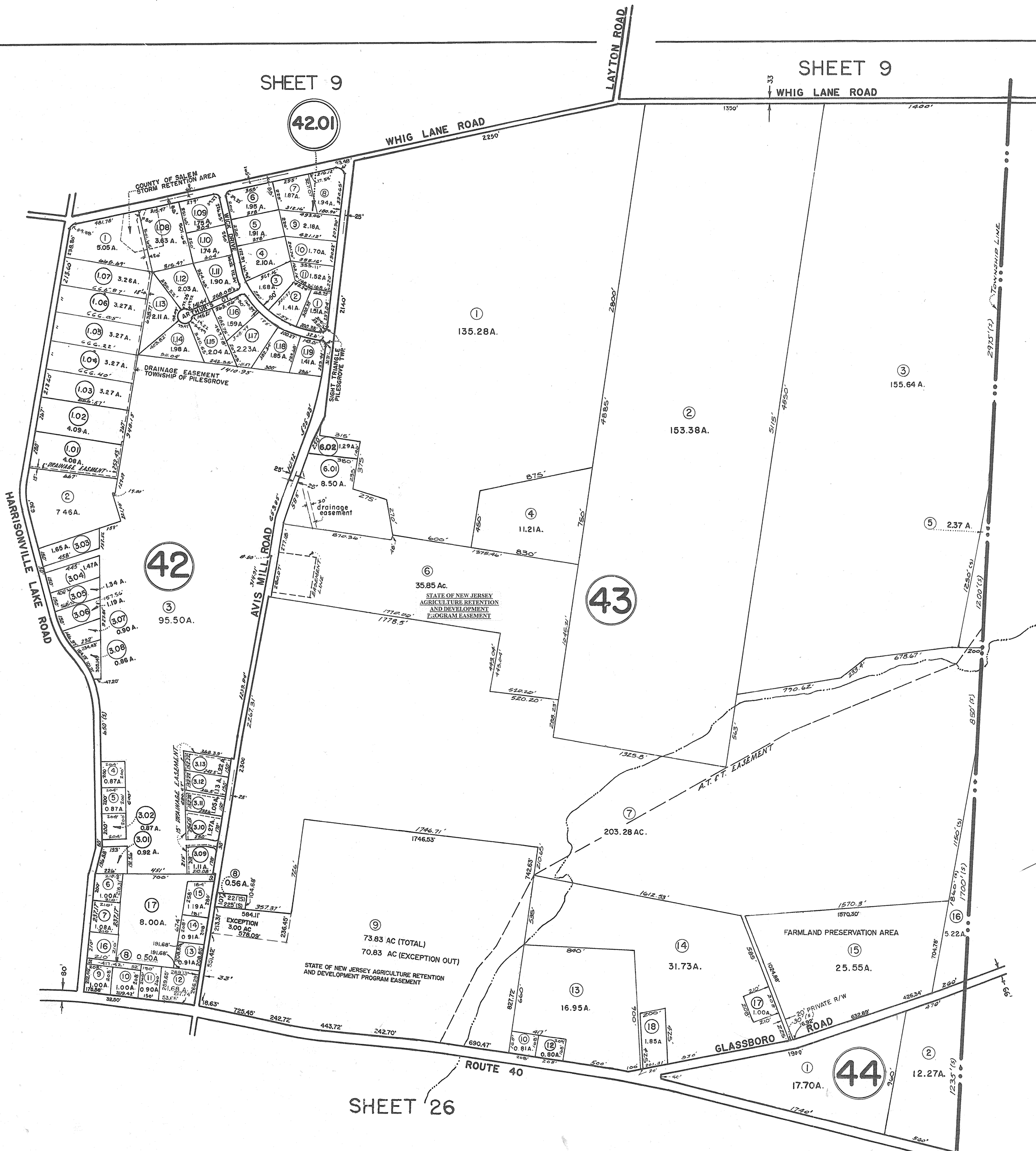
SHEET 7

SHEET 9

SHEET 9

SHEET 16

SHEET 26



UPPER
PITTS GROVE
TOWNSHIP

NEW JERSEY DEPARTMENT OF THE TREASURY
DIVISION OF TAXATION
ENGINEERING & RAILROAD TAX BUREAU
APPROVED AS A TAX MAP PURSUANT TO THE
PROVISIONS OF CHAPTER 175, LAWS OF 1913, ETC.
FOR THE DIRECTOR, DIVISION OF TAXATION
BY *A. Barnes*
DATE AUG - 8 1961 SERIAL NO. 327

TAX MAP
PILESGROVE TOWNSHIP
SCALE - 1" = 400'
SALEM CO., N. J.
SKINNER & COMPTON, ENGINEERS
JULY 3, 1961

THIS SHEET IS A SCANNED COPY OF THE TAX MAP ORIGINALLY PREPARED BY EUGENE COMPTON OF SKINNER & COMPTON, ENGINEERS, DATED: JULY 3, 1961. THE ORIGINAL APPROVED MAP IS ON FILE IN THE OFFICE OF THE TOWNSHIP ENGINEER.

NOTE: Lot No 11 Block No 13 unassigned
Lot No. 3.01 thru 3.08, Block 42 refer to "George Waddington Subdivision"
Lot No. 3.09 thru 3.13, Block 42 refer to "George & Janet Waddington Subdivision", filed 3/18/77 in S.C.C.O.#372
Lot No. 1.18, 1.19, Block 42 - Lot No. 1, Block 42.1 "Eldridges Hill Estates, Section No.1", filed 7/14/77 in S.C.C.O.#382
Lot No. 7 thru 11, Block 42.1 "Eldridge Hill Estates, Section, Section No.2", filed 11/6/77 in S.C.C.O.#397
Lot No. 1.01 thru 1.07, Block 42 refer to Eldridge Hill Estates, Section No.3, filed 4/9/79 in S.C.C.O.#428
Lots No 2, 3, Block 42.1, and Lot 1.17, Block 42 refer to "Eldridges Hill Estates" Section No.4 filed 12-5-80 in S.C.C.O.#462