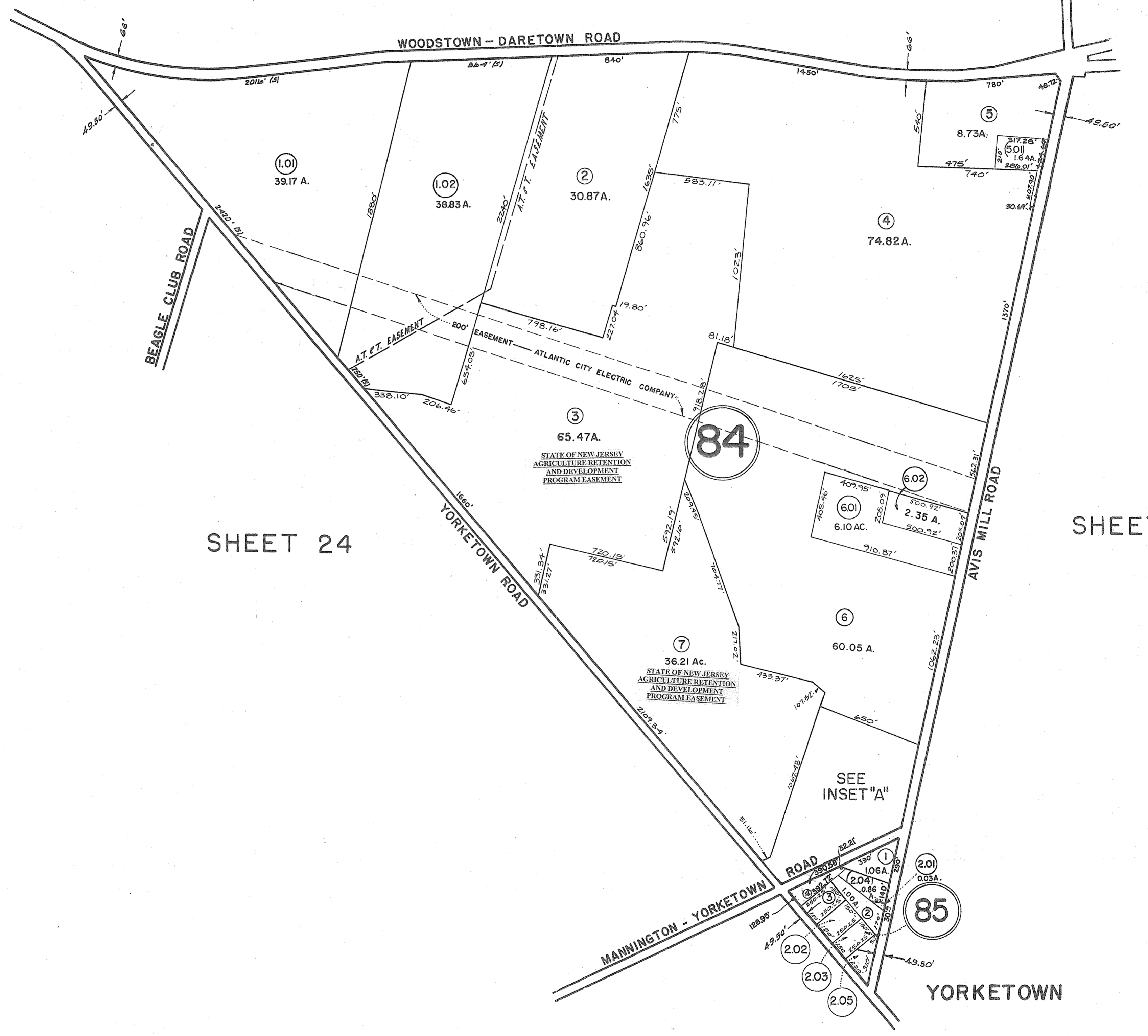


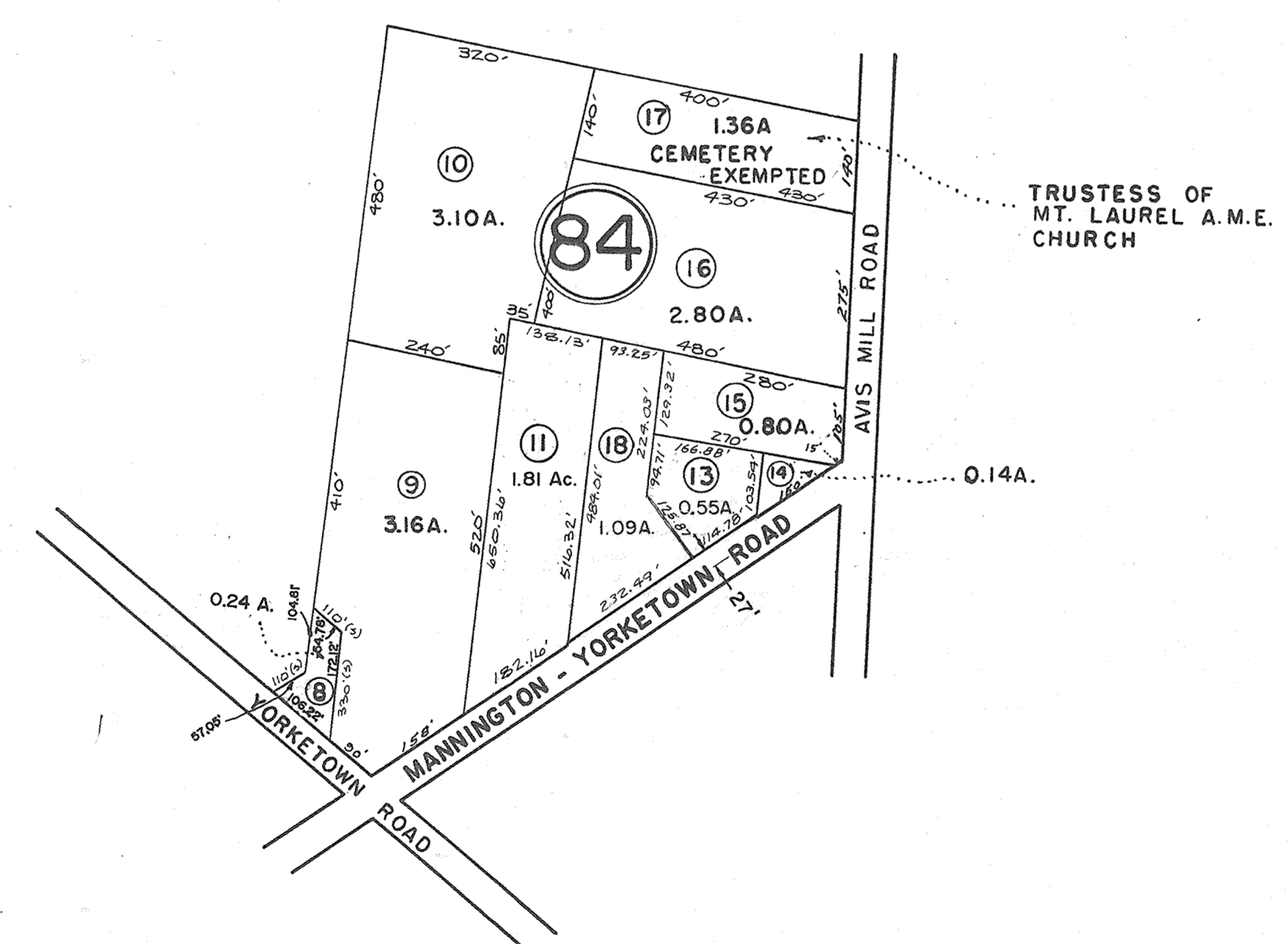
CAMP CROCKET

SHEET 25



SHEET 24

SHEET 28



INSET "A"
SCALE: 1" = 200'

NEW JERSEY DEPARTMENT OF THE TREASURY
DIVISION OF TAXATION
ENGINEERING & RAILROAD TAX BUREAU
APPROVED AS A TAX MAP PURSUANT TO THE
PROVISIONS OF CHAPTER 175, LAWS OF 1913, ETC.
FOR THE DIRECTOR, DIVISION OF TAXATION
BY *C. Skinner*
STATE SUPERVISOR
DATE AUG - 8 1961, SERIAL NO. 327

TAX MAP
PILES GROVE TOWNSHIP
SCALE 1" = 400'
SALEM CO., N.J.
SKINNER & COMPTON, ENGINEERS
JULY 3, 1961

Lot No 12, Block 84 unassigned
Lot No 1, Block 84 unassigned - 10/20/75

THIS SHEET IS A SCANNED COPY OF THE TAX MAP ORIGINALLY PREPARED BY EUGENE
COMPTON OF SKINNER & COMPTON, ENGINEERS, DATED: JULY 3, 1961.
THE ORIGINAL APPROVED MAP IS ON FILE IN THE OFFICE OF THE TOWNSHIP ENGINEER.